

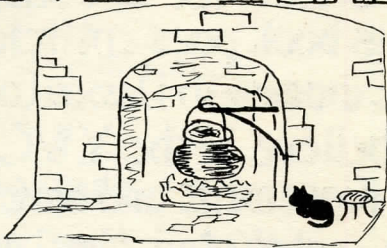
RECIPES FROM  
HISTORIC  
LONG ISLAND



*Roslyn Paper Mill*

*Henry R. Diamond*

RECIPES  
*From*  
HISTORIC  
LONG ISLAND



FIRST Edition

*COMPILED BY*

NASSAU COUNTY  
YOUNG WOMAN'S CHRISTIAN ASSOCIATION

copyrighted , 1940

NASSAU COUNTY

Young women's CHRISTIAN ASSOCIATION.



Credit for the success  
of this book goes entirely to  
those women in Nassau County  
who believe in the Y.W.C.A.  
as a movement and have will-  
ingly contributed time and  
thought toward a project that  
will be a means of making the  
Nassau County Y.W.C.A. a more  
vital force in our community.

# TABLE OF CONTENTS

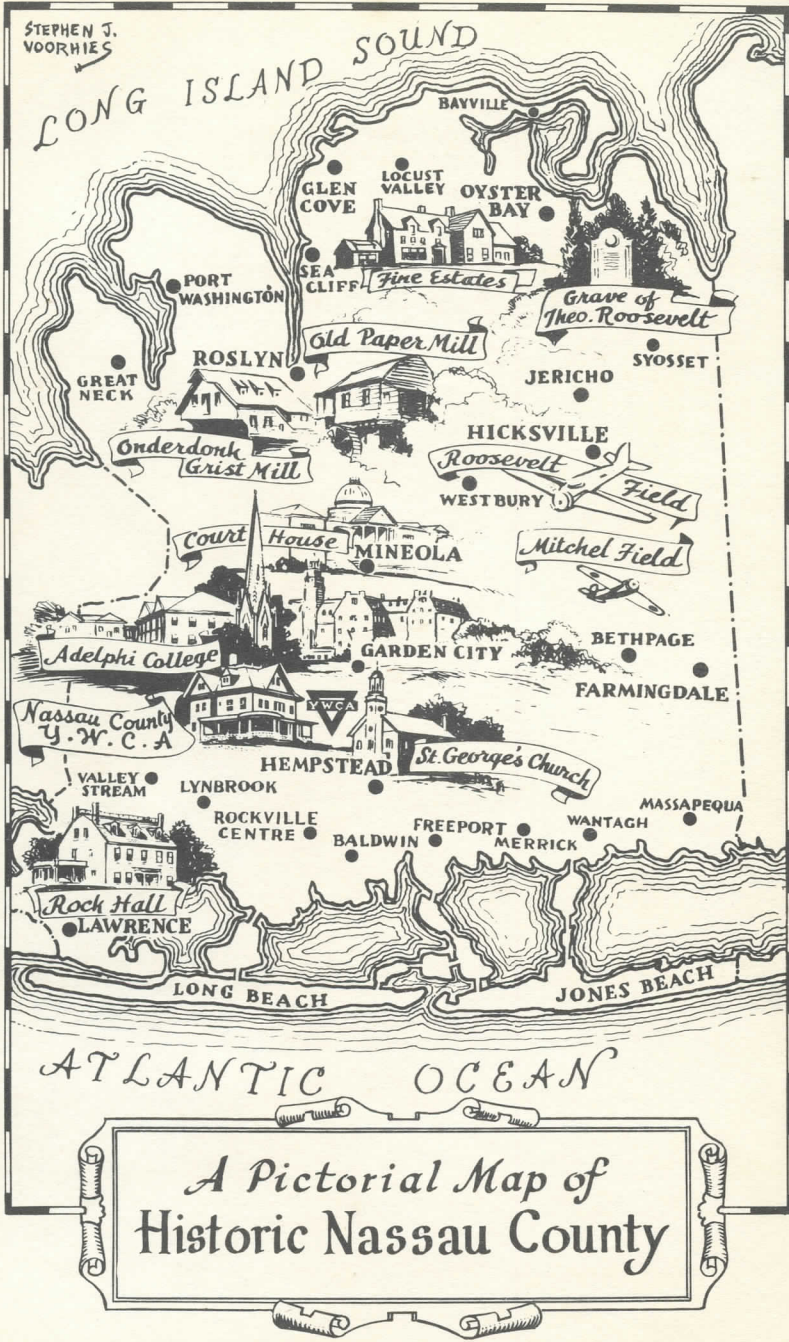
1. BEVERAGES AND CANAPÉS.	7
2. SOUPS.	21
3. CHEESE AND EGGS.	39
4. MEATS.	55
5. VEGETABLES + LUNCHEON DISHES.	75
6. FISH, FOWL, AND GAME.	105
7. BREADS	135
8. SALADS, DRESSINGS, + SAUCES	165
9. DESSERTS AND PASTRIES	181
10. CAKES AND COOKIES	241
11. RECIPES OF FAMOUS CHEFS	303
12. CHINESE DISHES	333
13. CANDY	345
14. PICKLES AND PRESERVES	353

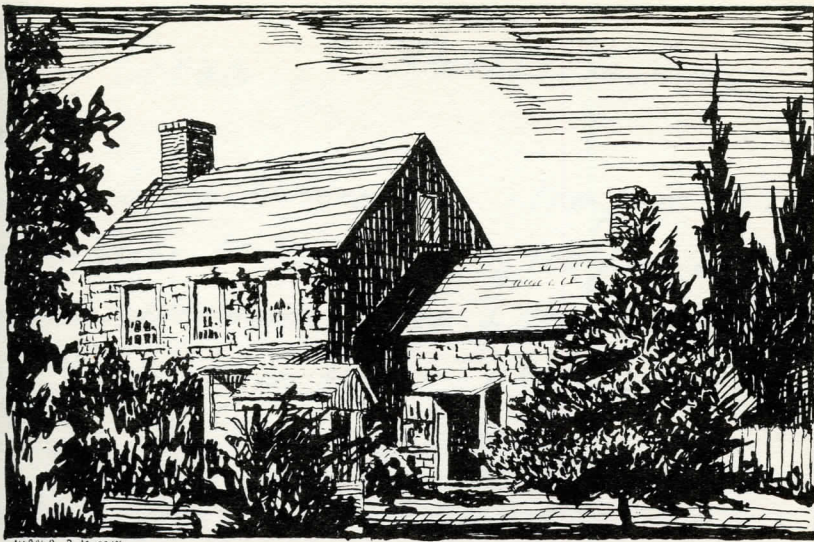
# Illustrations

	Page
Cover Henry A. Diamond.	
Map of Nassau County Stephen J. Voorheis.	2
Walt Whitman's Birthplace Harold R. Murray	29
First Presbyterian Church, Southold Elsie L. Scabury.	47
Raynham Hall Joan Chandler.	65
St. George's Church. Dorothy Voorheis	87
Old Mill - East Hampton Edna Denniston.	119
Bowne House - Flushing Dorothy Dosker.	147
Leffert's House - Brooklyn Gladys Richardson - Jones.	197
King Mansion - Jamaica Ethel H. Grote	255
Home Sweet Home, East Hampton Theresa Lonette	277
Game's End Paul Brown.	315



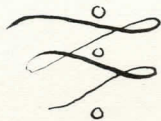
STEPHEN J. VOORHIES





## Walt Whitman's Birthplace

Built in 1810  
by Whitman's father,  
and here, America's  
most original  
Poet was born,  
May 31, 1819.







First Presbyterian Church  
1803  
Southold

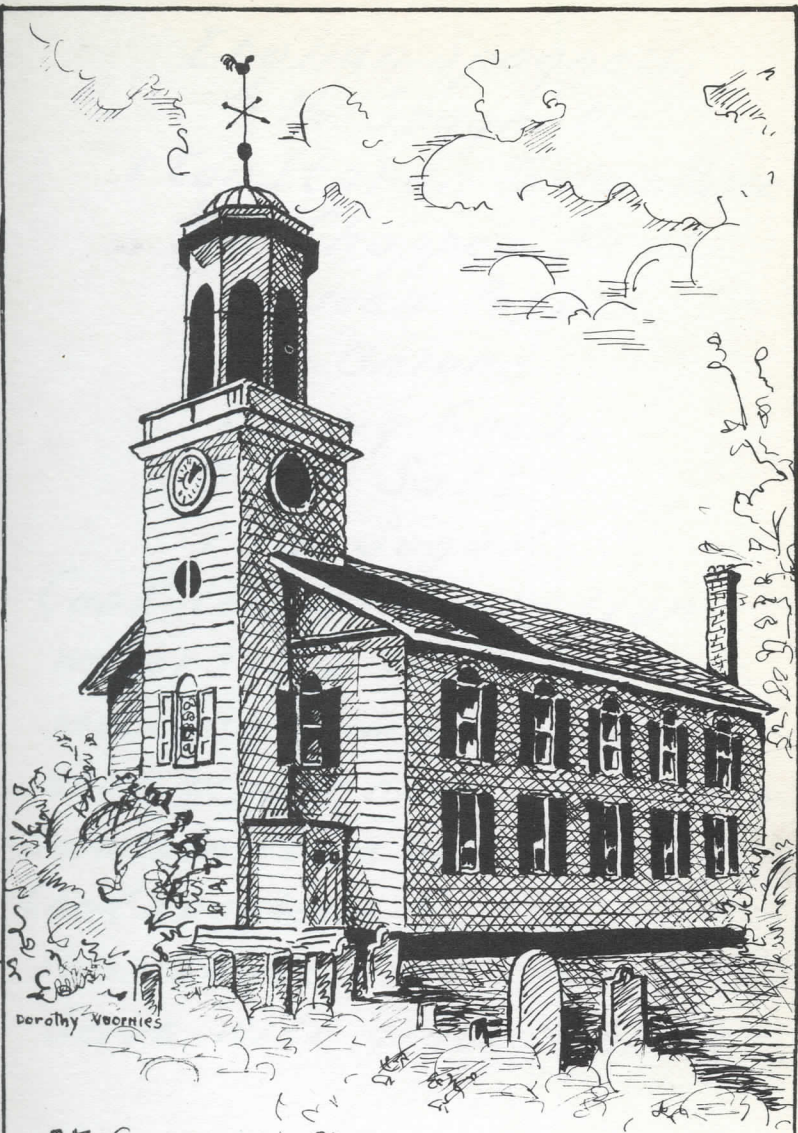




Joan Chandler

Raynham Hall  
Oyster Bay

Built in 1740 by Samuel Townsend  
now an historic museum  
open Tuesday and Thursday  
2-5 P.M.



St. George's Church - Hempstead  
1822

Noteworthy for its historic baptismal  
font, prayer book and silver communion set  
presented by Queen Anne in 1735.





Old Mill 1771  
East Hampton

One of three ancient wind mills  
located at East Hampton



Bowne House

1661

Flushing

This house was erected by John Bowne only one year before he was exiled by Peter Stuyvesant for two years to Holland because of his Quaker beliefs.

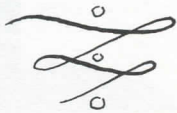


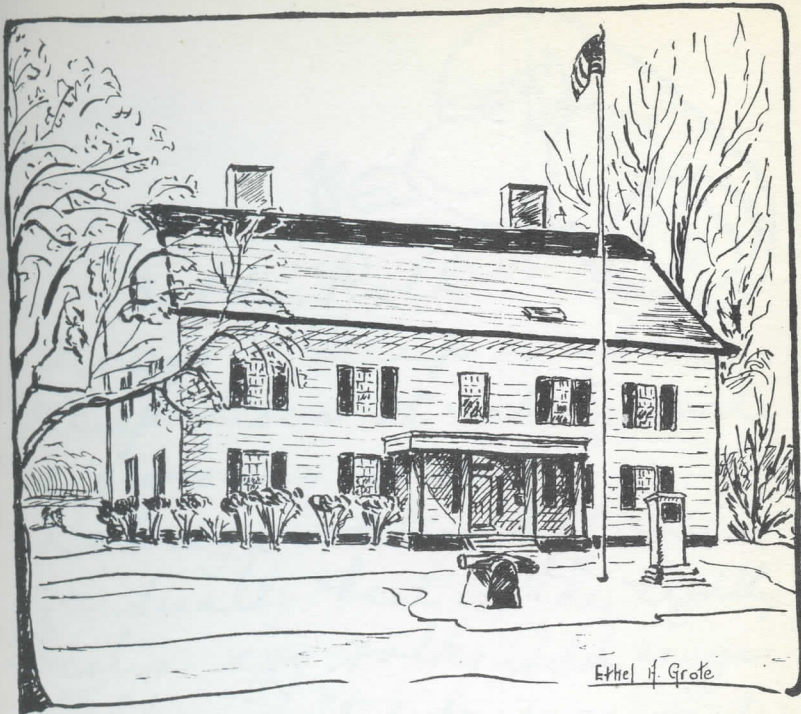


GLADYS RICHARDSON-JONES

*Lefferts House  
Brooklyn  
1777*

*Built by Peter Lefferts  
from the timbers of his  
home destroyed in the  
battle of Long Island*





# KING MANSION

Jamaica

1750

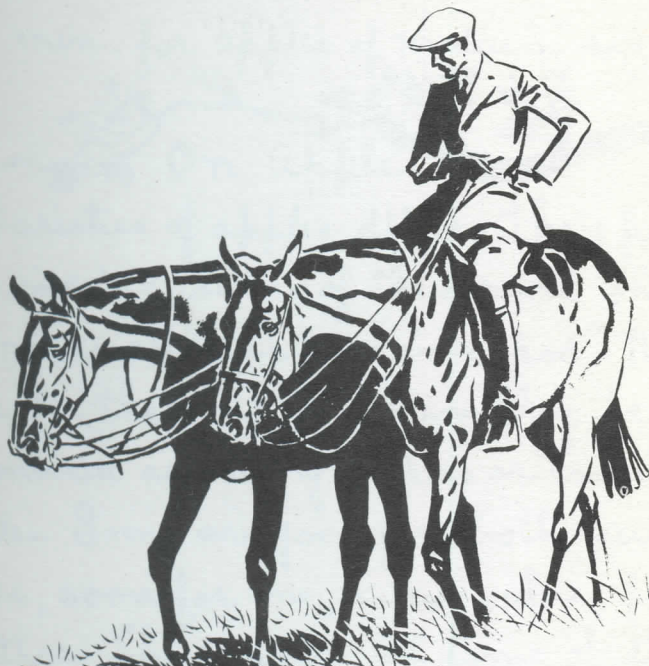
Home of Rufus King,  
twice ambassador to  
the Court of St. James





"HOME SWEET HOME" EASTHAMPTON -  
BIRTHPLACE OF  
JOHN HOWARD PAYNE  
1700

COLLECTION OF NOTABLE ANTIQUES  
OPEN 1-5 P.M. EXCEPT MONDAY



Games End

Ponies going home from  
Meadow Brook crossing the  
ridge where Lindbergh's  
wheels last touched the ground  
in this country at the start  
of his famous flight.

Paul Brown  
'40